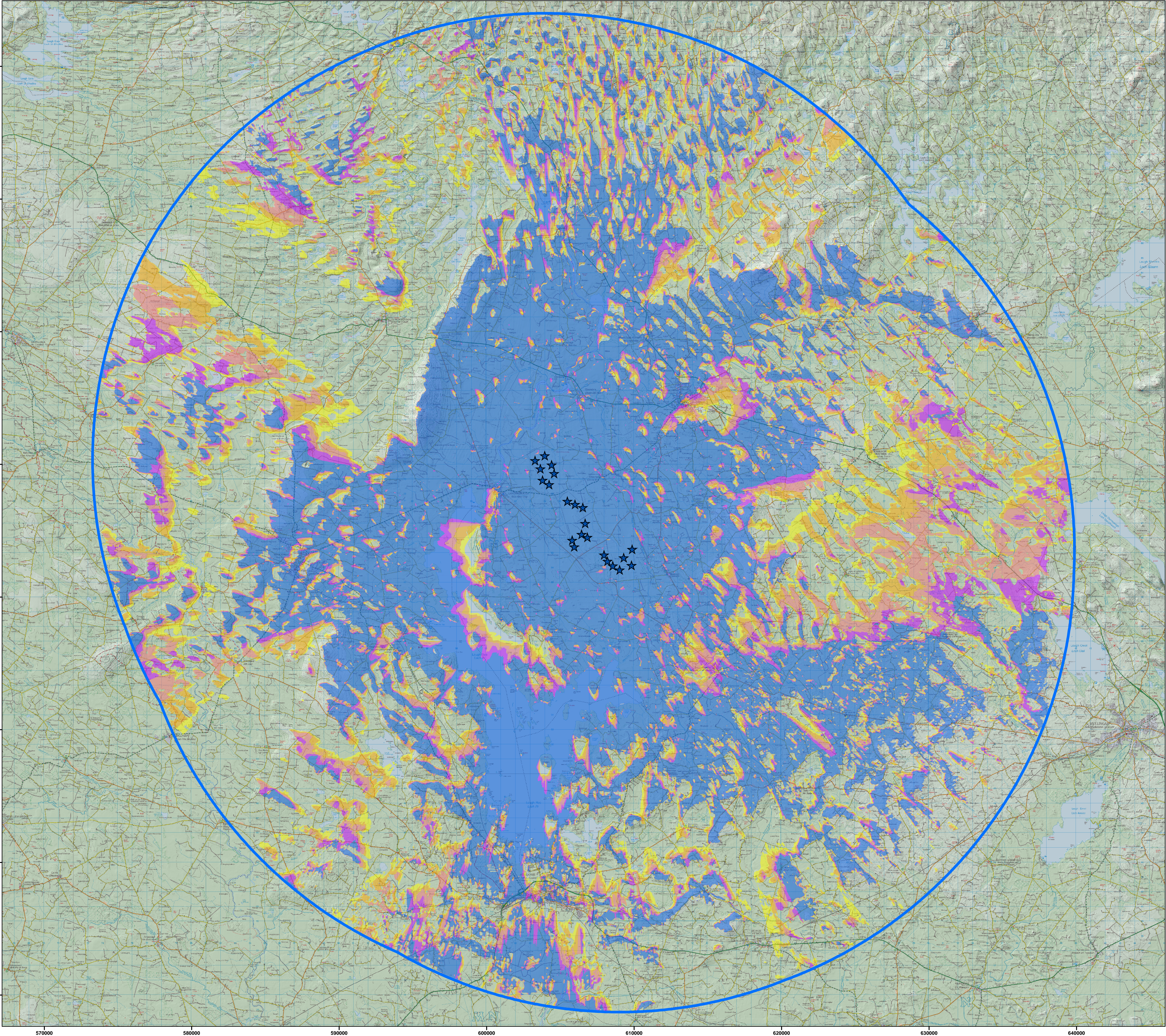


Appendix 13-2- ZTV Map



ZTV (Zone of Theoretical Visibility) indicating the areas that have a potential view of the proposed turbines at Derryadd Wind Farm (Tip Height 190m)



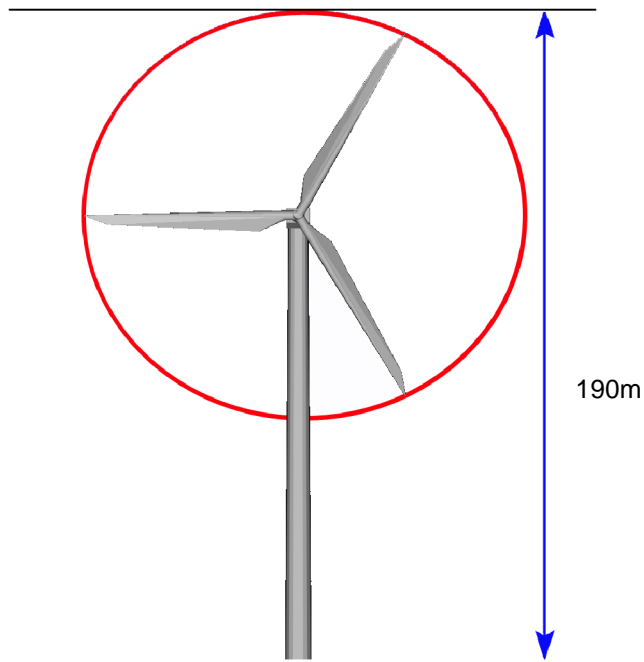
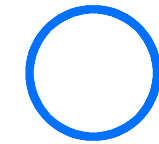
Proposed Turbines



No. Turbines Visible



30km Extent



This ZTV map is based on the potential to see any part of the proposed turbine/s from the tip to base in a theoretical bare-ground scenario i.e. without accounting for screening by vegetation and/or buildings.

Observer Height assumed: 1.7m to eye-level height
Tip Height: 190m

Scale: 1:125,000 if printed @ A1 size

